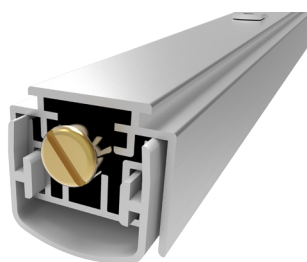


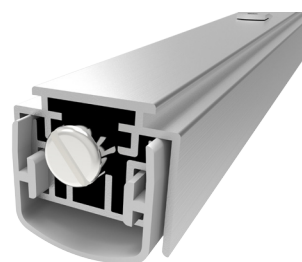
**AUTOMATIC DROP SEAL**  
**MASTER LINE - SERIES 24 MM**

**MAIN APPLICATION**  
**EURO GROOVE ALUMINIUM DOOR**

**DS-298EU298RT**



**DS-298EU298RTN**



SIZE	MAX SEAL GAP	MAX LENGTH	MIN LENGTH
24x17	13	1800	220

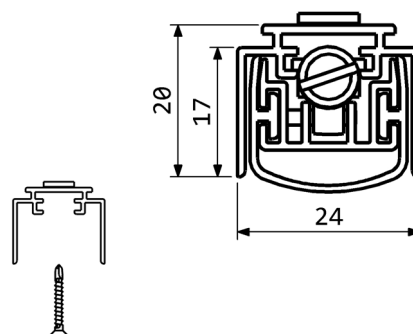
**FEATURES AND FUNCTIONALITY**

Air draughts, light and dust protection	Steel leaf springs mechanism
Barrier-free access	Low door opening and closing resistance
Energy saving	Acoustic insulation up to 50 dB
Durability up to 1000000 cycles	Smoke leakage < 3 m <sup>3</sup> /m/hr at 25 Pa
Self levelling drop	Suitable for fire doorsets

**MATERIALS**

Profiles	Aluminium alloy
Gasket	Self-extinguish silicone (working temperatures -40°C/+200°C)
Push button	Brass / Nickel plated brass
Mechanism	Steel

CODE	LENGTH mm	TRIMMING mm	BOX PCS
DS-298EU298RT400	400	180	50
DS-298EU298RT600	600	200	50
DS-298EU298RT800	800	200	50
DS-298EU298RT1000	1000	200	50
DS-298EU298RT1200	1200	200	50
DS-298EU298RTN400	400	180	50
DS-298EU298RTN600	600	200	50
DS-298EU298RTN800	800	200	50
DS-298EU298RTN1000	1000	200	50
DS-298EU298RTN1200	1200	200	50



**FIXING ACCESSORIES  
(OPTIONALS)**



PLASTIC COUNTER  
PLATE P1830

INOX COUNTER  
PLATE P2045KRV

**QUICK AND EASY INSTALLATION**

Measure the groove length.  
Check the product trimming length in the table provided.  
Cut the seal on the opposite side of the activating plunger.  
Place the push button on the hinge side.  
Extract the mechanism and fix the aluminium case into the groove by screws. Reinsert the mechanism up to the locked position.

Lift height adjustment: screw (to decrease) or unscrew (to increase) the push button by a flathead screw driver and find the optimal position opening and closing the door while the seal covers the gap along the entire door length.

DIMENSIONS IN [mm] - THE MANUFACTURER RESERVES THE RIGHT TO MAKE TECHNICAL CHANGES WITHOUT NOTICE