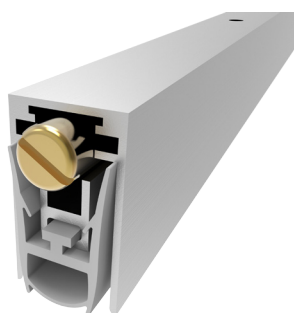


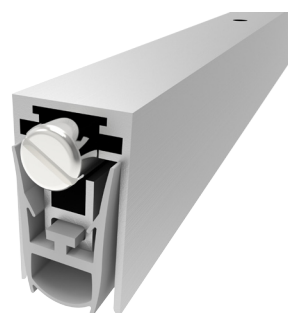
**AUTOMATIC DROP SEALS**  
**MASTER LINE - SERIES 16 MM**

**MAIN APPLICATION**  
**WOODEN DOOR - ALUMINIUM DOOR - SECURITY DOOR**

**DS-290SF41RT**



**DS-290SF41RTN**



SIZE	MAX SEAL GAP	MAX LENGTH	MIN LENGTH
16x28	14	1500	220

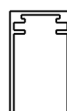
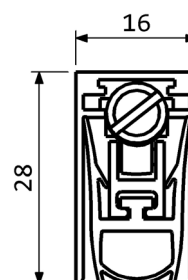
**FEATURES AND FUNCTIONALITY**

Air draughts, light and dust protection	Steel leaf springs mechanism
Barrier-free access	Low door opening and closing resistance
Energy saving	Acoustic insulation up to 50 dB
Durability up to 1000000 cycles	Smoke leakage < 3 m <sup>3</sup> /m/hr at 25 Pa
Self levelling drop	Suitable for fire doorsets

**MATERIALS**

Profiles	Aluminium alloy
Gasket	High grade self-extinguish silicone (working temperatures -40°C/+200°C)
Push button	Brass / Nickel plated brass
Mechanism	Steel

CODE	LENGTH mm	TRIMMING mm	BOX PCS
DS-290SF41RT400	400	180	50
DS-290SF41RT600	600	200	50
DS-290SF41RT800	800	200	50
DS-290SF41RT1000	1000	200	50
DS-290SF41RT1200	1200	200	50
DS-290SF41RTN400	400	180	50
DS-290SF41RTN600	600	200	50
DS-290SF41RTN800	800	200	50
DS-290SF41RTN1000	1000	200	50
DS-290SF41RTN1200	1200	200	50



**FIXING ACCESSORIES  
(OPTIONALS)**



PLASTIC COUNTER  
PLATE P1830

INOX COUNTER  
PLATE P2045KRV

INOX BRACKETS  
P2050

**QUICK AND EASY INSTALLATION**

Measure the groove length.  
Check the product trimming length in the table provided.  
Cut the seal on the opposite side of the activating plunger.  
Place the push button on the hinge side.  
Extract the mechanism and fix the aluminium case into the groove by screws. Reinsert the mechanism up to the locked position.  
Lateral fixing options: the seal can be fixed through the inox brackets P2050.  
Lift height adjustment: screw (to decrease) or unscrew (to increase) the push button by a flathead screw driver and find the optimal position opening and closing the door while the seal covers the gap along the entire door length.

DIMENSIONS IN [mm] - THE MANUFACTURER RESERVES THE RIGHT TO MAKE TECHNICAL CHANGES WITHOUT NOTICE