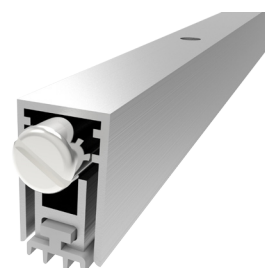
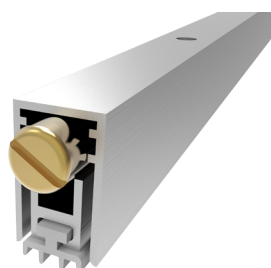


AUTOMATIC DROP SEALS
MASTER LINE - SERIES 12 MM

MAIN APPLICATION
INTERIOR TIMBER DOOR

DS-144A44RT

DS-144A44RTN



| SIZE | MAX SEAL GAP | MAX LENGTH | MIN LENGTH |
|-------|--------------|------------|------------|
| 12x20 | 12 | 1500 | 220 |

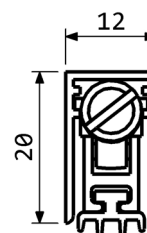
FEATURES AND FUNCTIONALITY

| | |
|---|---|
| Air draughts, light and dust protection | Self levelling drop |
| Barrier-free access | Steel leaf springs mechanism |
| Energy saving | Low door opening and closing resistance |
| Durability up to 1000000 cycles | Suitable for fire doorsets |

MATERIALS

| | |
|-------------|--|
| Profiles | Aluminium alloy |
| Gasket | Self-extinguish silicone (working temperatures -40°C/+200°C) |
| Push button | Brass / Nickel plated brass |
| Mechanism | Steel |

| CODE | LENGTH mm | TRIMMING mm | BOX PCS |
|------------------|--------------|----------------|------------|
| DS-144A44RT400 | 400 | 180 | 80 |
| DS-144A44RT600 | 600 | 200 | 80 |
| DS-144A44RT800 | 800 | 200 | 80 |
| DS-144A44RT1000 | 1000 | 200 | 80 |
| DS-144A44RT1200 | 1200 | 200 | 80 |
| DS-144A44RTN400 | 400 | 180 | 80 |
| DS-144A44RTN600 | 600 | 200 | 80 |
| DS-144A44RTN800 | 800 | 200 | 80 |
| DS-144A44RTN1000 | 1000 | 200 | 80 |
| DS-144A44RTN1200 | 1200 | 200 | 80 |



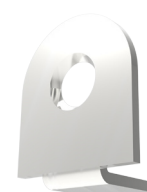
**FIXING ACCESSORIES
(OPTIONALS)**

QUICK AND EASY INSTALLATION

Measure the groove length.
Check the product trimming length in the table provided.
Cut the seal on the opposite side of the activating plunger.
Place the push button on the hinge side.
Extract the mechanism and fix the aluminium case into the groove by screws. Reinsert the mechanism up to the locked position.
Lateral fixing options: the seal can be fixed through the inox brackets P2050.
Lift height adjustment: screw (to decrease) or unscrew (to increase) the push button by a flathead screw driver and find the optimal position opening and closing the door while the seal covers the gap along the entire door length.



PLASTIC COUNTER
PLATE P1830



INOX BRACKETS
P2050

DIMENSIONS IN [mm] - THE MANUFACTURER RESERVES THE RIGHT TO MAKE TECHNICAL CHANGES WITHOUT NOTICE