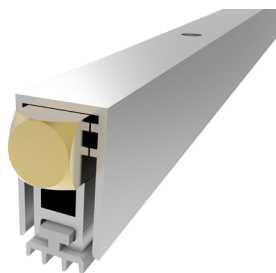


**DS-144A44RQ**



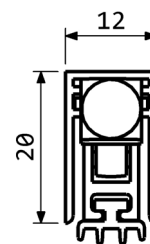
SIZE	MAX SEAL GAP	MAX LENGTH	MIN LENGTH
12x20	12	1500	220

**FEATURES AND FUNCTIONALITY**

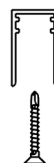
Air draughts, light and dust protection	Self levelling drop
Barrier-free access	Steel leaf springs mechanism
Energy saving	Low door opening and closing resistance
Durability up to 1000000 cycles	Suitable for fire doorsets

**MATERIALS**

Profiles	Aluminium alloy
Gasket	Self-extinguish silicone (working temperatures -40°C/+200°C)
Push button	Brass
Mechanism	Steel



CODE	LENGTH mm	TRIMMING mm	BOX PCS
DS-144A44RQ400	400	180	80
DS-144A44RQ600	600	200	80
DS-144A44RQ800	800	200	80
DS-144A44RQ1000	1000	200	80
DS-144A44RQ1200	1200	200	80



**FIXING ACCESSORIES  
(OPTIONALS)**

**QUICK AND EASY INSTALLATION**

Measure the groove length  
Check the product trimming length in the table provided.  
Cut the seal on the opposite side of the activating plunger.  
Place the push button on the hinge side.  
Extract the mechanism and fix the aluminium case into the groove by screws. Reinsert the mechanism up to the locked position.  
Lateral fixing option: the seal can be fixed through the inox brackets P2050.  
Lift height adjustment: extract the mechanism (hinge side) for about 3 cm and screw (to decrease) or unscrew (to increase) the push button.  
Reinsert the mechanism up to the locked position.  
Find the optimal position opening and closing the door while the seal covers the gap along the entire door length.



PLASTIC COUNTER  
PLATE P1830



INOX BRACKETS  
P2050

DIMENSIONS IN [mm] - THE MANUFACTURER RESERVES THE RIGHT TO MAKE TECHNICAL CHANGES WITHOUT NOTICE