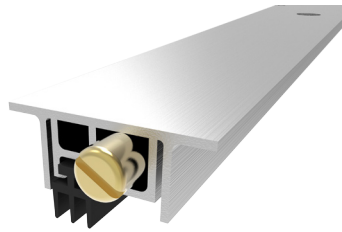


DS-106C02RT



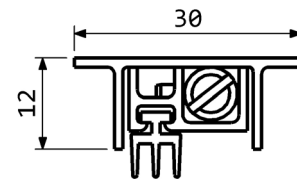
SIZE	MAX SEAL GAP	MAX LENGTH	MIN LENGTH
30x12	10	1500	220

FEATURES AND FUNCTIONALITY

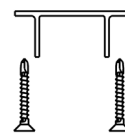
Air draughts, light and dust protection	Parallel drop
Barrier-free access	Steel leaf springs mechanism
Energy saving	Low door opening and closing resistance
Durability up to 1000000 cycles	Green PVC Compound

MATERIALS

Profiles	Aluminium alloy
Gasket	Self-extinguish PVC (working temperatures -10°C/+60°C)
Push button	Brass
Mechanism	Steel



CODE	LENGTH mm	TRIMMING mm	BOX PCS
DS-106C02RT400	400	180	70
DS-106C02RT600	600	200	70
DS-106C02RT800	800	200	70
DS-106C02RT1000	1000	200	70
DS-106C02RT1200	1200	200	70



**FIXING ACCESSORIES
(OPTIONALS)**

QUICK AND EASY INSTALLATION

Measure the groove length
 Check the product trimming length in the table provided. Cut the seal on the opposite side of the activating plunger. Place the push button on the hinge side. Fix the aluminium case into the groove by screws.

Lift height adjustment: screw (to decrease) or unscrew (to increase) the push button by a flathead screw driver and find the optimal position opening and closing the door while the seal covers the gap along the entire door length.



PLASTIC COUNTER
 PLATE P1830

INOX COUNTER
 PLATE P2045KRV

DIMENSIONS IN [mm] - THE MANUFACTURER RESERVES THE RIGHT TO MAKE TECHNICAL CHANGES WITHOUT NOTICE